



asta | powerproject

HOUSEBUILDERS:
MEETING YOUR COMPLETION TARGETS
COULD BE EASIER



See more at:
www.datcc.pl

MONITOR PRE-CONSTRUCTION ACTIVITIES, CAPTURE SITE PROGRESS PROMPTLY AND SPEED UP COMPLETION RATES

Top reasons why construction and production directors from UK housebuilders, both large and small, have chosen Asta Powerproject for planning their build programmes.

Display your build programme more effectively

▶ EASY TO USE

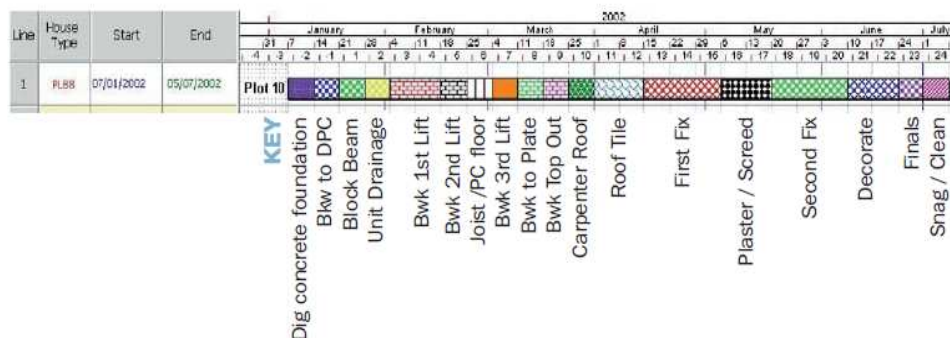
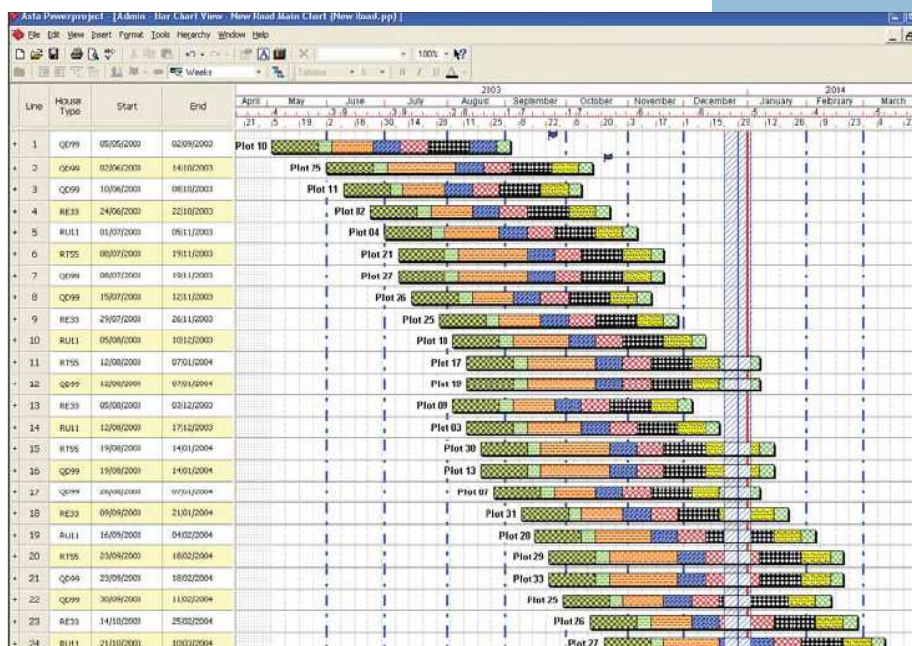
Start planning fast with an easy to use, housebuilder specific template. It mirrors the way you work on real build projects and has a familiar Microsoft style interface.

▶ SPEED UP COMPLETION RATES TO MEET TARGETS

Bar charts can show build stages for each unit on the same row, allowing you to view multiple house builds on one screen. It gives you visibility across all projects enabling you to spot delays and take action.

▶ MINIMISE DELAYS IN THE PRE-CONSTRUCTION PLANNING

Monitor pre-build activities such as materials procurement and planning permission within your plans. Including other departments in the process allows you to minimise any setbacks to the build start date.



“Our investment with Asta Development will allow for better communication about the status of our build programme within each of our businesses and also across the entire UK business, which will positively affect the way we do business and in turn lead to greater customer satisfaction. We are pleased to be working with Asta Development as they have proven that they can deliver a robust enterprise-wide project that will help drive our business forward.”

Jolyon Ingham, IT Director of
George Wimpey UK

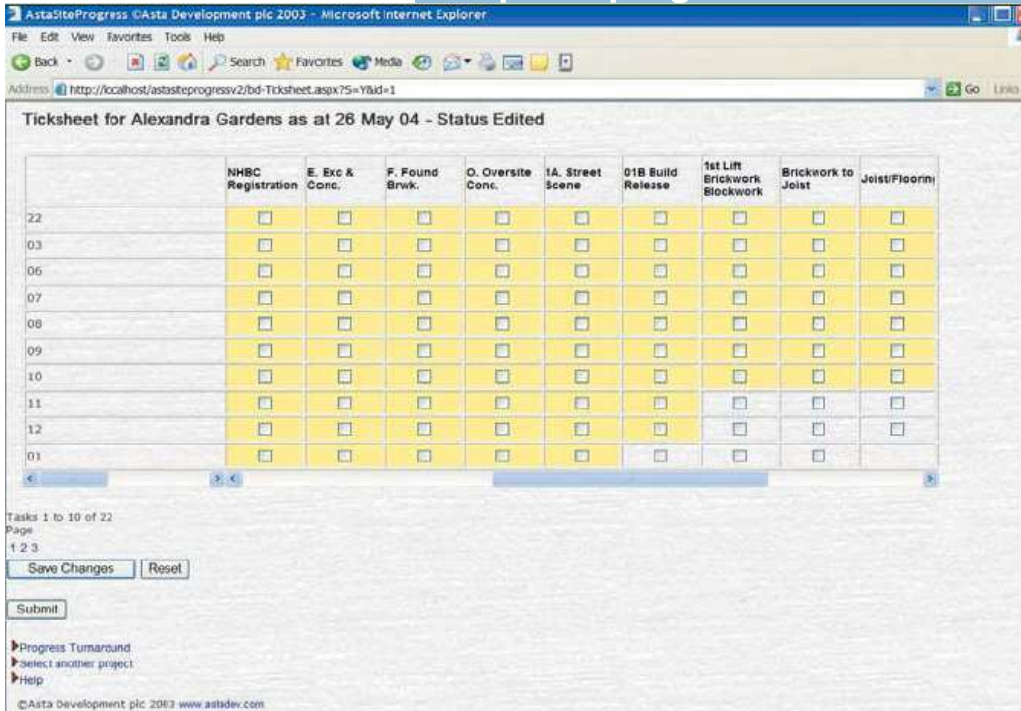


Update progress into a PDA as you walk around site

▶ CAPTURE PROGRESS FROM SITE PROMPTLY

Asta Siteprogress is a tool for site managers to record progress via the web or on a PDA (Pocket PC). With Asta Siteprogress, the activities to “progress check” can be presented in the order that the site manager walks around the site. This automated system reduces update times and input errors compared to the more traditional fax back method. Progress updates are automatically updated back into the main plan in Asta Powerproject. No on-site Internet connection required.

Update progress via the web



► Keep the data in your projects in line with the accounts system

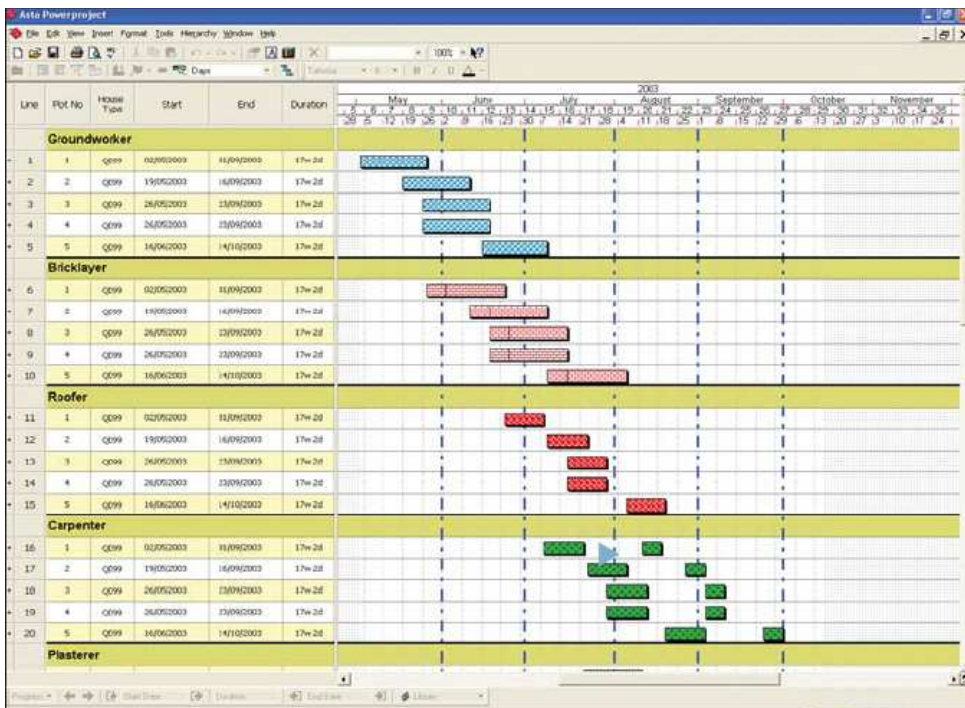
5

The accounts system also needs to hold accurate dates reflecting progress on a development. To save your office entering the data twice, Asta can develop an integration where you export data from the accounts system, and automatically update your plans. Asta Powerproject has been integrated with a number of accounting systems, such as COINS, Peoplesoft EnterpriseOne and RIB.

► Streamline management of trade contractors

6

Produce job sheets by pulling out a sub-section of the plan sorted by trade contractor showing tasks and deadlines. This can then be communicated to each trade contractor via email or fax. It also enables you to forward plan when different types of skills are required for the build, such as carpenters, plasterers and bricklayers.



Colour code and filter tasks to produce trade contractor reports

See more at web-page:
www.datcc.pl

“We used to collect progress from sites by marking up a hard copy plan and then manually inputting the progress into the master plan in Asta Powerproject. With Asta Siteprogress, our site managers/planners now use a PDA to record progress against tasks as they walk around the site. This information can then be automatically uploaded in Asta Powerproject via the Internet or at local network level. The biggest benefit for us is saved time. It used to take us at least one hour to update progress from each site – the link between the PDA and Asta Powerproject takes just a few minutes.”

Kyprianos Kyprianou,
Senior Planner,
HBG Construction

7

► Keep People Informed

It is easy to communicate plans effectively by printing out top quality reports in seconds. You can also customise the view of a project for different audiences.

You can output project information electronically to send by email in various file formats including:

- html
- Excel
- mpx
- pdf
- mdb

Visit our web-page: www.datcc.pl

8

Predfined and modifiable types of resource productivity (for measurement unit, for time unit) and levels of materials consumption for product units.

9

Many ways of work effort planning, also based on construction norms.

10

Many cost types: fixed costs, accrued basing on time or work volume.

11

Defining work scope performed by and accountable to each worker.

12

Miscellaneous ways of keeping records of performed work, incurred costs and schedule updating (e.g. general info only or detailed for each day).

13

Hierarchical structures and classifications of resources, equipment, materials, costs etc.

14

Defining any units of measurements, resources, equipment and materials.

15

Possibility of multiple suspending of execution of activities.

16

Work progress control in any user defined periods.

17

Critical chain project management.

18

Graphical display of complex tasks in one as well as in many lines.

19

Chart drawing based upon user-defined parameters and graphical symbols showing types of construction works.

20

Creating any number of baselines of each project and simultaneous comparing any number of baselines.

21

Ready to use report templates provided with the system, possibility of their modification and of creation new templates.

22

Creation of new data fields and computing user-defined indices.

Online software demonstration at www.astadev.com/democentre

Visit the demo centre area of our website to view an online software demonstration of Asta Powerproject -as it is designed to work for housebuilders.

The demo shows you how to:

- Get started with Asta Powerproject
- Speed up the planning process
- Manage subcontractors
- Capture progress from sites
- Manage upstream activities
- Output plans

"Asta Powerproject offers excellent presentation capability, particularly for bar charts. It is easy to present plans in clear and user-friendly ways that can be understood by any team member.

It is not only during the construction stage that we use Asta Powerproject at Antler Homes Wessex. We also utilize the software for tasks such as, for instance, the production of our Master Project Plans covering the whole spectrum of the development process from planning consent through to the completion of each project."

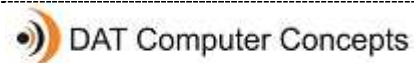
Alfred Tilt, Construction Director,
Antler Homes

▶ ABOUT OUR CUSTOMERS

Clients using Asta

Powerproject include:

- Antler Homes
- Berkeley Group plc
- Countryside Properties plc
- George Wimpey
- Laing Homes
- Persimmon plc



Project Management Consulting

DAT Computer Concepts Sp. z o. o.
ul. Jeździecka 21f
05-077 Warszawa-Wesoła

Tel. +48 22 401 22 02/03
Fax +48 22 401 22 04
www.datcc.pl
info@datcc.pl